



[www.colonnaship.com](http://www.colonnaship.com)



**Family Owned – Values Focused**

**Cutting Edge Technology**

Colonna's Shipyard, Inc. is a diversified industrial company, with multiple divisions and affiliates delivering the highest quality ship repair, machining, welding, steel fabrication and Industrial maintenance services to both the commercial and government markets.



**COLONNA'S SHIPYARD, INC.**



**COLONNA'S SHIPYARD WEST**



**COLONNA DOWN RIVER DIVISION**



400 East Indian River Road – Norfolk, VA 23523

[www.colonnaship.com](http://www.colonnaship.com)

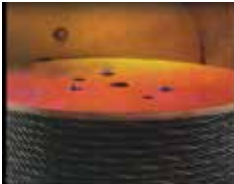
SHIPBUILDING & SHIP REPAIR

# 159

## SHIPBUILDING & SHIP REPAIR

Shipbuilding & Ship Repair .....159

### YOUR ONE SOURCE FOR



WIRE ROPE



CORDAGE PRODUCTS



HOISTS + PARTS



FALL PROTECTION



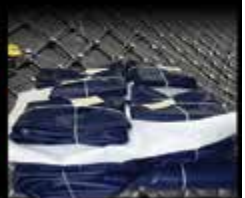
PROOF TESTING



RIGGING HARDWARE



SLINGS — ALL TYPES



TARPS + NETS

5931 Thurston Avenue  
Virginia Beach, VA 23455  
Phone: 757-460-3300

**MAZZELLA**<sup>®</sup>

>> [mazzellacompanies.com](http://mazzellacompanies.com)

402 Aberdeen Road  
Hampton, VA 23661  
Phone: 757-827-9600

# SHIPBUILDING & SHIP REPAIR



*BAE Systems Norfolk Ship Repair.*

## ■ BAE SYSTEMS NORFOLK SHIP REPAIR

BAE Systems Norfolk Ship Repair, a division of BAE Systems Ship Repair, is a full-service shipyard on the Southern Branch of the Elizabeth River that has served Virginia's ports in the maritime industry since 1915. An ISO 9001 certified company, BAE Systems Norfolk Ship Repair has enjoyed the reputation as the largest private-sector shipyard in South Hampton Roads and one of the largest ship repair facilities on the East Coast of the United States. In 2007, it earned a "Creating Excellence Award" in career development and technical education from the Commonwealth of Virginia for its robust and improved apprentice program, one of only a few in the region.

At present, BAE Systems Norfolk Ship Repair maintains a skilled workforce of approximately 1,500 people working in 20 diversified trade shops and departments. This workforce and state-of-the-art facilities, improved with over \$70 million in capital investments since 1999, provide a comprehensive capability for ship repair, conversion and modernization, enabling the company to serve most of the world's oceangoing vessels on site.

BAE Systems Norfolk Ship Repair has extensive crane service, four operational piers totaling over 3000-feet of berthing space, and two drydocks, including:

- The "Titan" with a 52,534 long-ton lifting capacity, is one of the world's largest and most modern floating steel drydocks. It measures 950-feet (290 meters) long, 192-feet (59 meters) wide and 160-feet (49 meters) between wingwalls. The Titan is moored to the east side of the 1,280-foot-long Pier 1, used to service ships as long as 1,200-feet.
- The "Old Dominion" is a steel drydock with a 14,000 long-ton lifting capacity, which is berthed at the north side of Pier 6. It measures 569-feet (173 meters) long, 122-feet (37 meters) wide and 99-feet (30 meters) between wingwalls.

The company also offers a full range of repair services for ships located away from the shipyard. Vessels that do not require entry into a repair facility, or have limited time to do so, can remain at their present location, and BAE Systems Norfolk Ship Repair's mobile "ship repair teams" will travel to these vessels to perform the required services.



BAE Systems Norfolk Ship Repair is also able to leverage its ship maintenance capabilities in a variety of industrial conversion, repair, and construction services. Specializing in industrial plant construction, repair, and conversion, the company's **Industrial Conversion and Repair Division** provides around-the-clock response to meet customer needs. Services are available 24 hours a day, seven days a week, throughout the United States.

Visit [baesystems.com/shiprepair](https://baesystems.com/shiprepair) for more details.

## ■ COLONNA'S SHIPYARD, INC.

Colonna's Shipyard is a full service ship repair facility located in Norfolk, Virginia. Founded in 1875, it is a family owned, private shipyard situated on the Eastern Branch of the Elizabeth River occupying more than 100-acres of land and is convenient to all port facilities and terminals in the Ports of Virginia. The company's reputation is built on a long tradition of quality workmanship provided by its highly skilled workforce, outstanding facilities and solid management. The shipyard has water access to over 3,000-feet of vessel/boat berthing space and lift capacity to accommodate all vessels up to 850-feet in length, 104-feet wide and depth of 28-feet.

The shipyard capabilities include three floating dry-docks; 16,000 ton Captain Will, 2,800 ton Willoughby III, and 11,500 ton Charles J, one marine railway, and eight wetberths. Colonna's is also home to the nation's largest mobile boat hoist, a 1,000 MT Marine Travelift. Designed for rapid response, the Travelift can provide the ultimate in shipyard efficiencies. The Travelift, in conjunction with new piers and infrastructure, can dryberth ten vessels simultaneously.

Colonna's Shipyard is proud of its time-honored reputation of integrity in the ship repair industry. One of Colonna's most valuable assets is its skilled workforce representing the full spectrum of marine trades including highly skilled welders, shipfitters, electricians, pipefitters, inside machinists, outside machinists, corrosion control specialists, steel fabrication technicians, riggers, and ship repair management teams.



*Colonna's Shipyard, Inc.*

The shipyard's Down River Division will support ship repair needs anywhere in the world. All trades and necessary support equipment are ready to accomplish timely voyage repairs away from the shipyard. The shipyard's production services are additionally supported by complete engineering, testing, and design capabilities.

**For a full list of Colonna's Shipyard capabilities, visit their website at: [colonnaship.com](http://colonnaship.com).**

## ■ COLONNA'S SHIPYARD - STEEL AMERICA

Steel America, a division of Colonna's Shipyard, Inc., is a large fabrication and heavy machine shop that specializes in custom projects and prides itself on its diverse capabilities, including a highly skilled on-site machining team.

In 2023 Steel America completed a major expansion to its machine and fabrication shops. The machine shop added a 200-foot expansion to the existing 47,000 sq. ft facility increasing by 40% while reducing turnaround times on large shafting projects. The expansion houses five new state-of-the-art pieces of equipment to include: three new Tacchi turning and milling lathes, a new Horizontal Mill with 60+ tons capacity and a new stress relief oven. Steel America features a total of seven large heavy turning lathes; the largest capable of >100 tons, 100-feet between centers, and 130-inches+ turning diameter.

This capital investment in additional equipment reflects Steel America's commitment to remaining the premier shaft repair and procurement source for our customers.

The fabrication shop expansion added 17,000 sq. ft. to the facility increasing capacity by 35% with 100T lifting capability. Steel America also built a 15,000 sq. ft. Steel Processing Center that houses a new Messer Multi-Process Burning table, a 1500T AccuPress machine, a DAVI four-roll Plate Roller and a 25T bridge crane. Steel America has also added a new BEAMCUT steel shape processing machine, a Miller Robotic welder, and ESAB Versa-Trac welding/arcing machines.



*Colonna's Shipyard -Steel America.*

## ■ FAIRLEAD BOATWORKS & FAIRLEAD STRUCTURES

Fairlead Ship Repair, located in Newport News and Portsmouth, performs maintenance and repair of ships, small boats, and watercraft, and provides heavy fabrication in support of shipbuilding. The Yard supplies repair services to our commercial and military customers.

The Main Yard features 500-ton and 250-ton lifts, a 220-ton transporter, and 12 designated dry berths. Fairlead can dry dock vessels up to 250 long tons. The Main Yard has 900-feet of fendered bulkhead with full services to support pier-side work, accessible via a navigable channel with a depth of 12-feet at mean low water. The North Yard is a 5-acre waterfront property that serves as a fabrication space, material lay-down, and vessel repair facility. The property supports heavy fabrication work for customers on a 70-foot x 240-foot concrete and steel platen, with a two-bay 150-foot x 140-foot building for blast & paint and fabrication processes.

Fairlead Structures, located in Portsmouth, fabricates, assembles, and preserves large ship modules, up to 500 tons, in support of aircraft carrier and submarine construction.

Fairlead Dock & Storage, located at Fairwinds Landing, has a mile of pier space for dockage/lay birth and nearly 1,000,000 sq. ft. of warehouse space for bulk storage and several acres for outdoor storage.



*FAIRLEAD VESSEL REPAIR AND PRESERVATION.  
Fairlead Boatworks, Newport News, VA ~ Fairlead Structures, Portsmouth, VA.*



## ■ INFRA -METALS CO.

With an exceptionally wide range of products and services, Infra-Metals is one of the largest structural steel service providers in the United States. We specifically tailor our centers to meet the needs of the regions they supply, and we maintain a steadfast commitment to providing high quality materials and service promptly and economically.

Our extensive inventory features products ranging from beams and tubes to sheets, channels and expanded metal, and our processing capabilities include just about everything from cutting and drilling to blasting and painting. Infra-Metals is a one-stop shop for all your structural carbon steel needs. We are well positioned to satisfy your needs in New England, Mid-Atlantic, Midwest, and South East.

A leading distributor of structural steel and a member of the Reliance Steel & Aluminum Co. family, Infra-Metals serves as a consolidated source for materials and processing and significantly streamlines our clients' procurement procedures. We can provide a wide variety of products with relatively short notice, which combined with our processing capabilities allows us to get our clients the correct material in a form that's immediately ready for the job. Products and Services:

Infra-Metals Co. is one of the largest structural steel service centers in the United States. We offer a wide variety of carbon structural steel products such as:

- Structural Beams
- Tubing,
- Angles
- Channel & Miscellaneous
- Flats
- Rounds
- Squares
- Plate and Sheet Products
- Pipe
- Expanded Metal and many other items.

Infra-Metals Co. has a wide variety of processing capabilities that add value to our product offering. As your one-stop shop service center we can provide you with the inventory you need and the services required to complete your project on time. Processing capabilities include:

- Blast & Prime
- Cambering
- Drilling
- Forming
- Milling
- Plate Burning & Plasma Cutting
- Saw Cutting
- T-Splitting



*Infra-Metals Facility.*

# SHIPBUILDING & SHIP REPAIR



*Lyon Shipyard, Inc.*

## ■ LYON SHIPYARD, INC.

Lyon Shipyard, Inc. is a full service ship repair facility providing timely and efficient service to commercial and government vessels since 1928. Commercial customers include tug and barge operators, dredging and marine construction contractors, ferry and cruise ship operators, research vessels and commercial fishing companies. Government customers include the U.S. Navy, U.S. Army, the Coast Guard, Military Sealift Command and the Maritime Administration.

Located on the Eastern Branch of the Elizabeth River, Lyon occupies approximately 1500 linear feet of waterfront providing pierside repairs for vessels up to 500-feet in length with supporting bulkhead staging and work areas. Three floating drydocks and three marine railways accommodate a variety of vessels with a lifting capacity up to 4,900 long tons.

Well equipped shops are capable of precise work and experienced craftsmen provide a wide variety of skills including steel fabrication; machining; sheet metal fabrication; welding of various steel alloys, stainless steel and aluminum; surface preparation and painting; pipe fitting; ship fitting; machinery repairs; carpentry; electrical work; rigging; crane service and other specialized services as needed.

Lyon's offers the same quality services to the industrial base through its Downriver Services and Industrial Services Divisions. We will bring the skilled workforce and our capabilities to you with the support of a full service shipyard.

Lyon's Downriver Services division is a full service Marine Repair Contractor serving the US Navy, Military Sealift Command, Maritime Administration, USCG, NOAA and Commercial Ship Owners and operators worldwide. Let our mobile ship repair teams come to you. Lyon's Industrial Services division applies our ship maintenance capabilities for industrial conversion, repairs and construction services. Both divisions offer services twenty four hours a day, seven days a week.

Lyon stands ready to respond to your needs promptly with service available around the clock at our facility or yours. Call us at 757-622-4661 or visit our website at [lyonshipyard.com](http://lyonshipyard.com).





*MHI Ship Repair and Services.*

## ■ MHI SHIP REPAIR AND SERVICES

For over 50 years, Marine Ship Repair and Services, LLC (“MHI”) has been a leading provider for full-range ship maintenance, repair, and modernization services to the U.S. Navy, Military Sealift Command and commercial operators in Norfolk, Virginia. MHI, through its affiliates, also provides hull cleaning, ship husbandry services, underwater painting and inspections, wastewater treatment, and chemical cleaning services globally.

Located along the Elizabeth River, in the deep-water harbor unrestricted by any bridges, MHI services various types and sizes of vessels. With an ISO 9001:2015 compliant approved facility, MHI provides full ship repair services around-the-clock either at our 1,200-foot long / 40-foot draft pier facility or via mobile teams; available services include shore power, crane service, steam, potable water, fire protection, gases, internet/phone lines, and project management office space.

MHI’s full complement of trained shipwrights include pipefitters, shipfitters, welders, machinists, electricians, riggers, and painters. MHI provides service to hull, machinery, and electronic systems. MHI will respond to inquiries worldwide and has a staff and agency network committed to customer satisfaction. From minor maintenance to major repairs and modernization, put MHI’s capabilities and experience to work for you. We can support your vessels at our Midtown shipyard facility, at a Commercial Terminal, or at sea; MHI will deliver.

Please visit us at [www.MHI-shiprepair.com](http://www.MHI-shiprepair.com).



*Virginia-class submarine Montana (SSN 794) and USS George Washington (CVN 73) are seen along Newport News Shipbuilding's waterfront. Photo courtesy of HII/Ashley Cowan.*

## ■ NEWPORT NEWS SHIPBUILDING

For over 135 years, the ships built at Newport News Shipbuilding, like the American shipbuilders who continue to build them, have served our nation in peace and war, in times of adversity and in times of abundance. The shipyard's legacy of "Always Good Ships" includes the design, construction, overhaul and repair of more than 800 ships for the U.S. Navy.

Today, Newport News Shipbuilding, a division of Huntington Ingalls Industries, is the nation's sole designer, builder and refueler of nuclear-powered aircraft carriers and one of only two shipyards capable of designing and building nuclear-powered submarines. Newport News Shipbuilding also provides fleet services for naval ships.

Located on more than 550-acres along two miles of waterfront in Newport News, Virginia, the shipyard employs more than 25,000 people, many of whom are third-, fourth- and fifth-generation shipbuilders. It is the largest industrial employer in the commonwealth, and with more than 4,000 engineers, designers and technicians, Newport News Shipbuilding is at the forefront of new ship technologies, specialized manufacturing capabilities and nuclear facility management.

Steel fabricating facilities include a fabrication shop covering 6.5-acres with automated steel handling and processing equipment. Some machines operate from direct input from the company's computer system. Steel subassemblies are produced in an 11-acre steel production facility.



*USS John C. Stennis (CVN 74) arrives at Newport News Shipbuilding on May 6, 2021, to begin its mid-life refueling overhaul and maintenance availability. The ship will be the seventh Nimitz-class aircraft carrier to undergo its refueling and complex overhaul. Photo courtesy of HII/Ashley Cowan.*

A land-level ship construction area features a 130,000 sq. ft. module outfitting facility, and a 74,000 sq. ft. supplemental outfitting facility. The machine shops cover over 300,000 sq. ft. and contain more than 250 machines varying in size from small engraving machines to 42-foot boring mills. The 102,400 sq. ft. sheet metal facilities work metals from #22 gauge to one-quarter thick, and occasionally one-half-inch thick. Equally extensive facilities are included in the plant for working all types of electrical and pipe work, and in 2017, the Joint Manufacturing Assembly Facility opened to support construction of the Gerald R. Ford-class aircraft carrier and Virginia- and Columbia-class submarine programs.

Newport News Shipbuilding's 155,000 sq. ft. foundry is one of the oldest and largest in the United States. It can pour steel up to 100,000 pounds, and can pour alloy steels (including high-strength alloys for submarine hulls), copper nickel, aluminum, brass and other non-ferrous alloys. Supporting the foundry is a 61,235 sq. ft. wood pattern shop. Large, complex patterns from this shop are used to produce castings for military ships.

Plant facilities also include the largest dry dock in the Western Hemisphere, measuring at 2,173-feet long and 250-feet wide. Depth of water over the entrance sill is 32 feet, 7 inches. Removable intermediate gates can be placed in several positions in the dock to allow for both construction and repair work to be performed simultaneously.

With vast facilities, technology and experienced shipbuilders, Newport News Shipbuilding has the capability to handle every aspect of ship repair, from routine maintenance to extensive machinery and hull repairs.

Please visit our website at [nns.huntingtoningalls.com](http://nns.huntingtoningalls.com).





*QED*

## ■ QED

QED is a nation-wide engineering and technical services firm providing high quality services and support to government and commercial clients since 1969. Our team includes over 750 employees who are dedicated not only to their jobs, but also endeavor to provide our nation's warfighters responsive and cost-effective technical solutions.

QED uses a disciplined engineering and technical approach, established information technology (IT) systems, and highly qualified personnel to develop processes and procedures for cost-effective life cycle support. For over 50 years, our proven approach has made QED a leader in marine engineering, alteration development, installation support, technical documentation, advance and production planning, material management, and information technology. Our emphasis on customer satisfaction, quality management and continuous improvement has earned our company a reputation for excellence and has significantly contributed to the material readiness of Hull, Mechanical, Electrical, Electronic, and combat systems on surface ships, submarines, and shore based commands.



QED promotes and maintains a safe and healthy working environment for all of its employees and partners.



*Solomon Shipyard.*

## ■ SOLOMON SHIPYARD

Solomon Shipyard is a 13-acre, full service shipyard formally known as ANA and East Coast Repair. Jon Solomon, president of IFPC, purchased the shipyard to expand the capabilities of a 30 year investment in supporting our private, government and military sectors in the ship repair industry. Located in Portsmouth, VA at the mouth of the western branch of the Elizabeth River and directly across from Portsmouth Marine Terminal, the heart of the Offshore Wind Project. Solomon Shipyard is accessible by a 17' channel that is maintained by the Army Core of Engineers and has unobstructed access to the Atlantic Ocean with no air draft. The shipyard provides convenient transit as it is a short distance off Rt. 164, 58 and 264.

Solomon Shipyard specializes in, but is not limited to, preservation, ship repair, fabrication on coastal and harbor vessels and voyage repairs to ocean travelers. Solomon Shipyard's highly trained workforce consists of a full spectrum of welders, shipfitters, electricians, pipefitters, machinists, riggers, steel fabricators and a management team well known and respected throughout the industry.

The yard is outfitted with a metal fabrication shop, specializing in material up to one inch, and is capable of building everything imaginable. The yard is also equipped with a 250-ton travel lift, giving the yard multiple vessel docking capabilities. The yard also features a 250-foot concrete pier equipped with portable water, 480, 220, 120 VAC power, compressed air and is suitable for berthing vessels up to 350-feet.

Please visit [www.internationalflooring.com](http://www.internationalflooring.com) for more information about our other divisions and to meet our fantastic team.

# SHIPBUILDING & SHIP REPAIR



## ■ TÉCNICO CORPORATION

Técnico Corporation is an employee-owned, customer-driven company. Our focus is on providing marine and industrial services to a wide range of clients, including the U.S. government and commercial entities across the globe. Despite being a small business, we possess exceptional capabilities as a marine industrial contractor and are recognized as a leader in the maritime industry for ship repair, maintenance, and modernization. Additionally, we excel in fabrication and scaffolding services.

Founded as a provider of ship repair services to local Master Ship Repair yards in the Hampton Roads area, Técnico has maintained a successful and profitable operation as a small marine industrial company for over three decades. Técnico is headquartered in Chesapeake, adjacent to a U.S. Navy mega-port and major commercial area, perfectly positioned to service and support the needs of all regional shipyards.

From the Pacific to the Atlantic we go where the work is. By maintaining strategic locations, we are ready to provide rapid response and put our abilities to work on-board ships. We operate in ports across the U.S. with facilities/offices along the East and West Coast including Chesapeake, VA; Philadelphia, PA; Mayport, FL; Bremerton, WA; and, San Diego, CA.

In the realm of maritime excellence, Técnico stands as a steadfast ally to an array of distinguished clientele. Our customers encompass ship owners, major U.S. Shipyards, the U.S. Navy, U.S. Coast Guard, Military Sealift Command, Maritime Administration, and commercial shipping organizations. At the core of our mission lies an unyielding commitment to enhancing the secure and effective functionality of our clients' vessels, whether they navigate the seas for commercial, support, or defense objectives. Ensuring the safety and seamless operation of these maritime assets remains our foremost priority, propelling our relentless dedication forward.

As part of our commitment to excellence, we operate under a Quality Management System that complies with ISO 9001:2015 standards. Quality is of paramount importance to us, and we strive to deliver work of the highest caliber. We conduct our business with unwavering integrity and prioritize the safety and well-being of our employees, partners, and customers in all aspects of our operations. Moreover, we have established an accredited Apprenticeship Program, which serves as a crucial initiative to cultivate and foster a skilled workforce, contributing to our overall success.

An essential pillar of our success is our far-reaching global support network, carefully woven with dependable suppliers, accomplished subcontractors, and valuable industry partners. This network empowers us to swiftly and economically address our clients' needs. By fostering seamless cooperation with our industry counterparts and subcontractors, we streamline operations and fulfill a range of objectives. These objectives encompass not only innovative solutions and safe working conditions, but also the pursuit of competitive pricing, expedited lead times, exceptional craftsmanship, and an unwavering commitment to service reliability.

Please visit [www.tecnicocorp.com](http://www.tecnicocorp.com) or contact us at 757-545-4013.





## LEADING USL&H COVERAGE FOR WATERFRONT EMPLOYERS

Since 1986, Signal Mutual has served as the premier provider of USL&H benefits in the United States, meeting the demand for reasonable and stable Workers' Compensation insurance rates.

We are a Bermuda-domiciled, nonprofit mutual organization authorized by the DOL as a Group Self-Insurer. Delivering coverage for USL&H and its extensions, Signal provides employers with expertise, tools, and resources to improve their bottom line and protect the well-being of their employees.



Signal GovCon offers Defense Base Act coverage that leverages the expertise of seasoned underwriting, claims, and safety teams to provide an efficient risk transfer model tailored to U.S. government contractors.



Signal SafeShore is a guaranteed-cost Workers' Compensation product, offering cost-effective longshore cover to meet the unique needs of small and mid-sized waterfront employers.

Shipbuilders, ship repairers, marine terminal operators, stevedores, marine contractors, and federal contractors can request a quote from Signal through their insurance broker.

[signalmutual.com](http://signalmutual.com)




**Serving the U.S. Military & Maritime Industry Since 1969!**

<p><b>Planning Services</b>          Ship Maintenance &amp; Modernization/          Specification Development</p> <p><b>Engineering Services</b>          Design &amp; Engineering Support</p> <p><b>Technical Services</b>          Ship Maintenance &amp; Modernization          Services</p>	<p><b>Logistics</b>          Technical Documentation/          Shipyard Support</p> <p><b>Fabrication</b>          Shipboard Habitability/Outfitting          Structural Fabrication</p> <p><b>Training &amp; Development</b>          NAVSEA Certified Courses/Skilled Trades          American Red Cross/ OSHA Courses</p>
---	--

**QED Headquarters**  
 4646 North Witchduck Road  
 Virginia Beach, VA 23455

[www.qedsysinc.com](http://www.qedsysinc.com) 757.490.5000

***Quod Erat Demonstrandum | "That Which Has Been Proven"***

